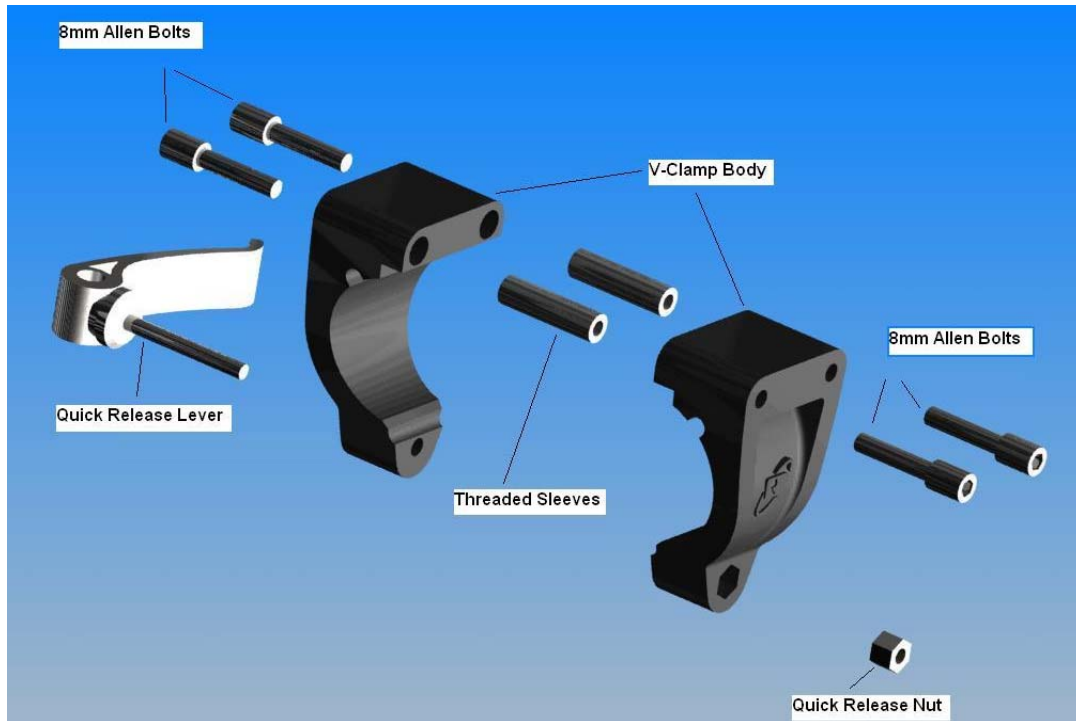


## V Clamp Seat Mount Installation

This figure shows the exploded view of the V-Clamp Seat Clamp (BAST0060).

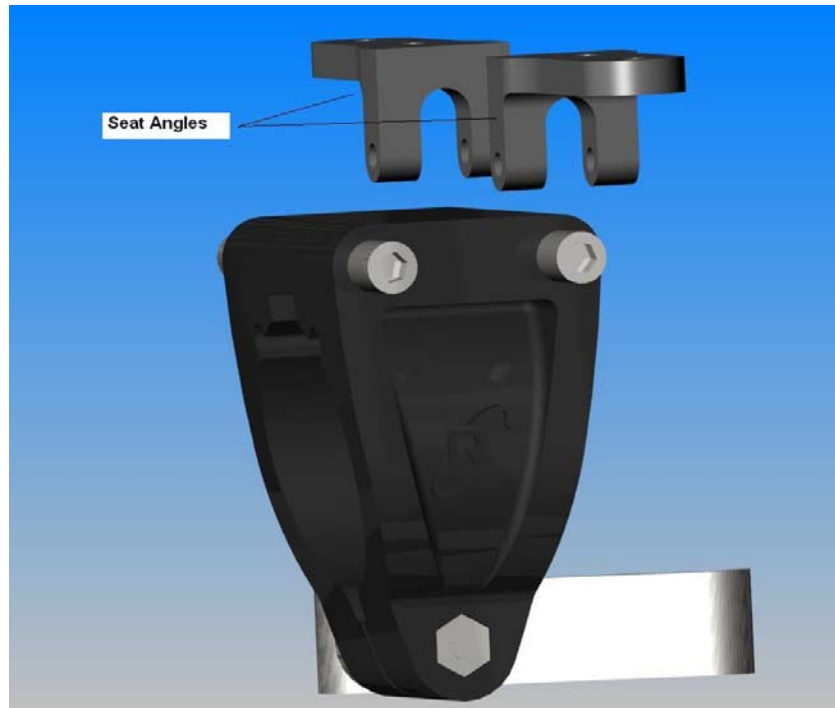


- 2 x threaded sleeves
- 4 x 8mm allen bolts
- 1 x quick release lever
- 1 x quick release nut
- 1 x plastic clamp body (2 pieces)

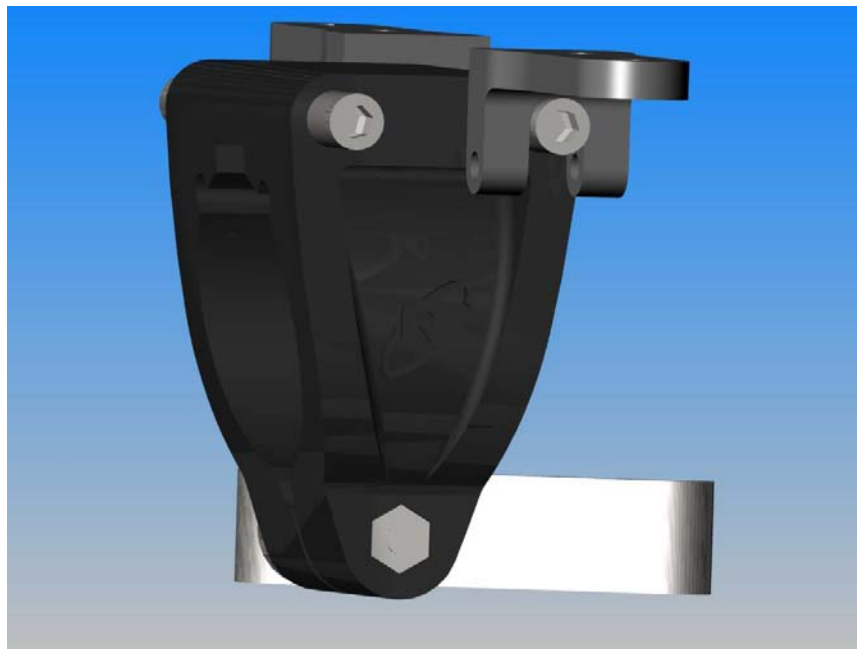
1. The V-Clamp should be assembled as shown below. The Clamp body will mount around the main tube of the bicycle and provide an adjustable mounting position for the seat.



2. Position the seat over the V-Clamp mount so that the seat angle grooves (shown below without the seat) are directly above either the forward or rearward 8mm bolts protruding from the V-Clamp body.



3. Lower the seat so that the seat angle grooves slide over the 8mm bolts. Be sure the seat angles are completely seated onto the bolts to ensure enough clearance for the securing pins. Applying one's bodyweight to the seat can aid in seating the seat angles over the 8mm bolts.



4. Slide the securing pin into the lower holes of the seat angle to secure the seat to the V-Clamp. If the pin will not slide completely through the holes, check that the pin fits into the seat angle when not mounted on the V-Clamp.

If the pin fits, reseat the seat angles onto the V-Clamp and try again.

If the pin does not fit with the V-Clamp absent, it may be necessary to file the holes to allow clearance for the securing pin. New seat angles tend to have a tight fitting securing pin.



If you are still unsuccessful, please call our RANS customer help line at 785-625-6346.